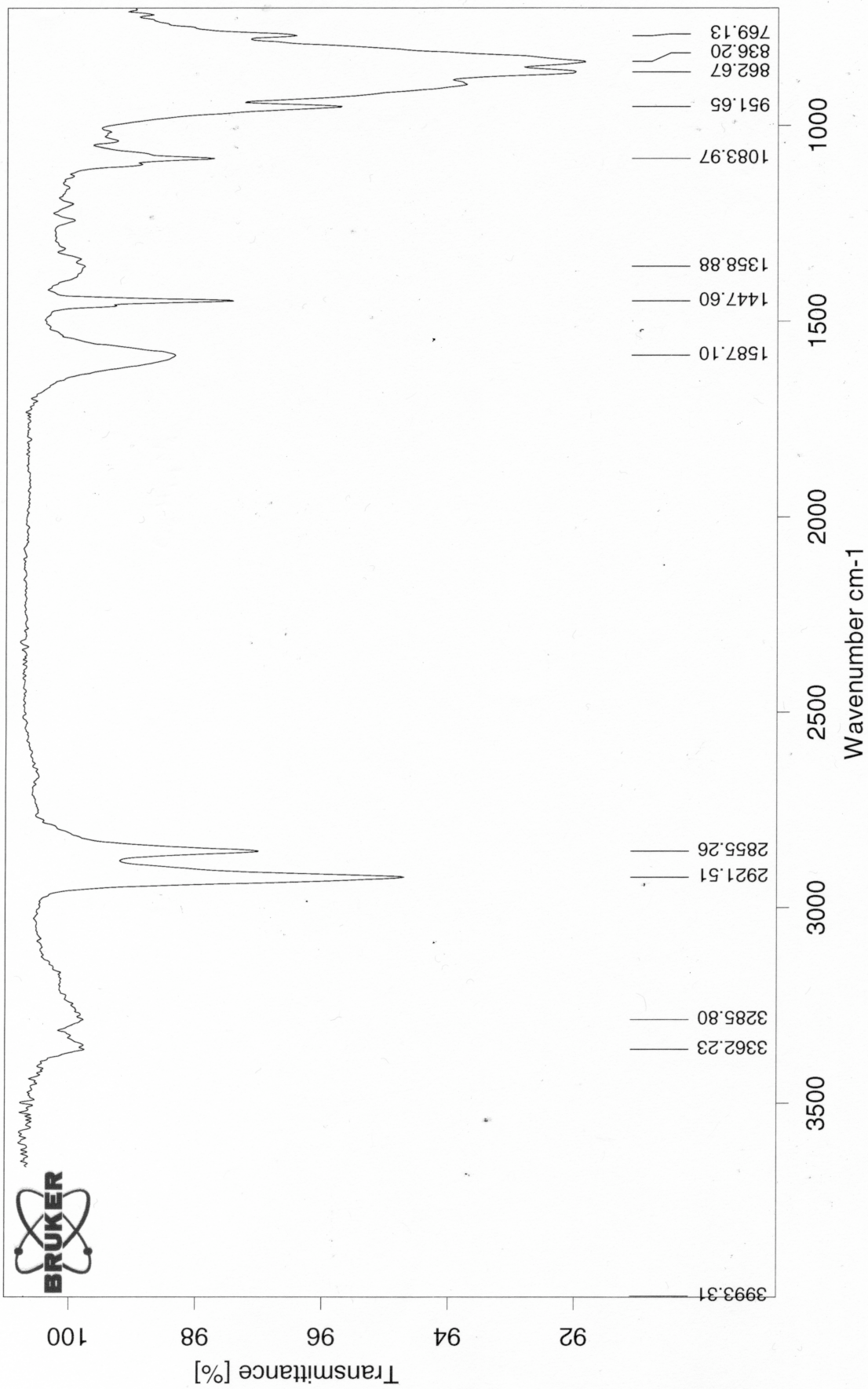
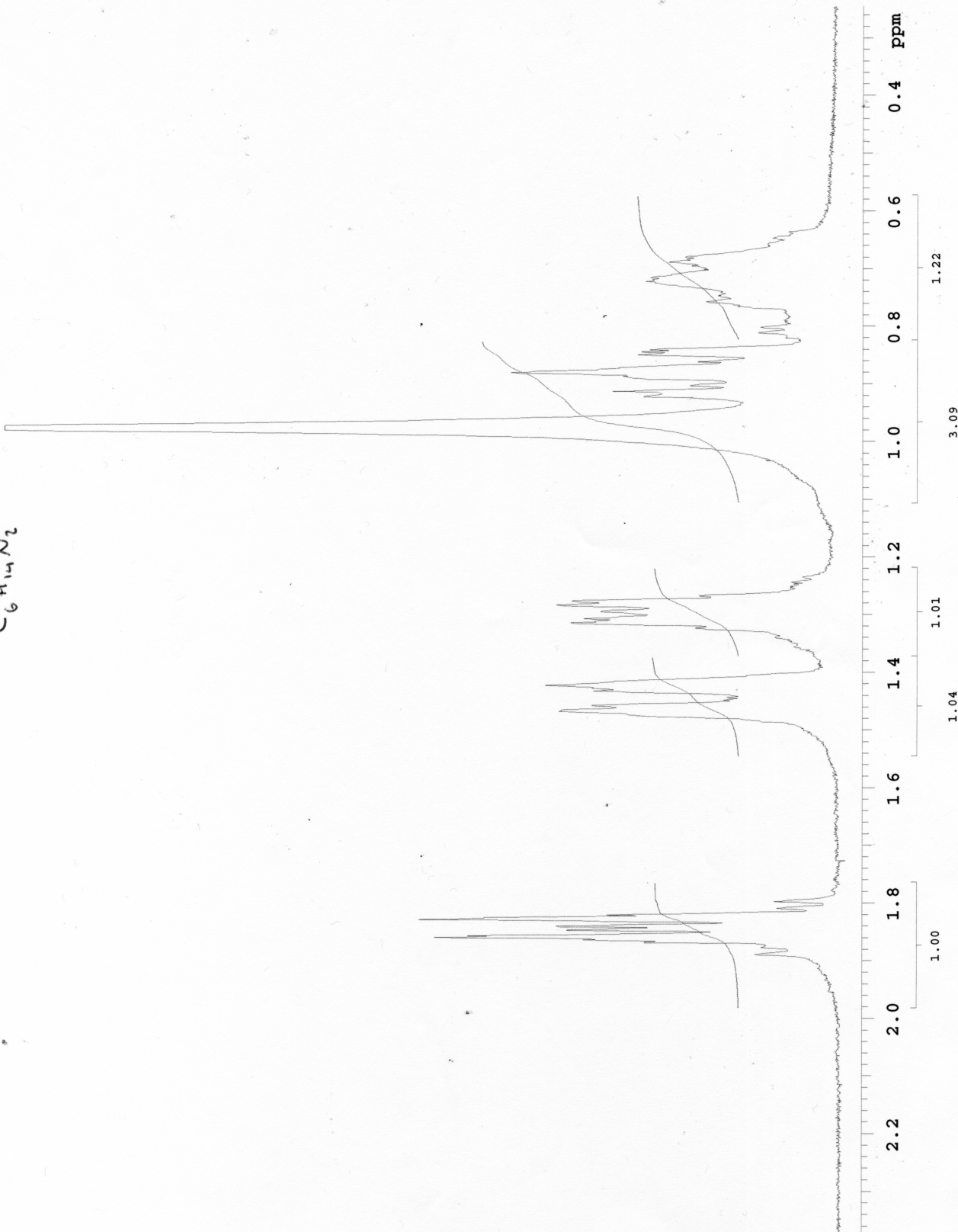


C₆H₁₄N₂

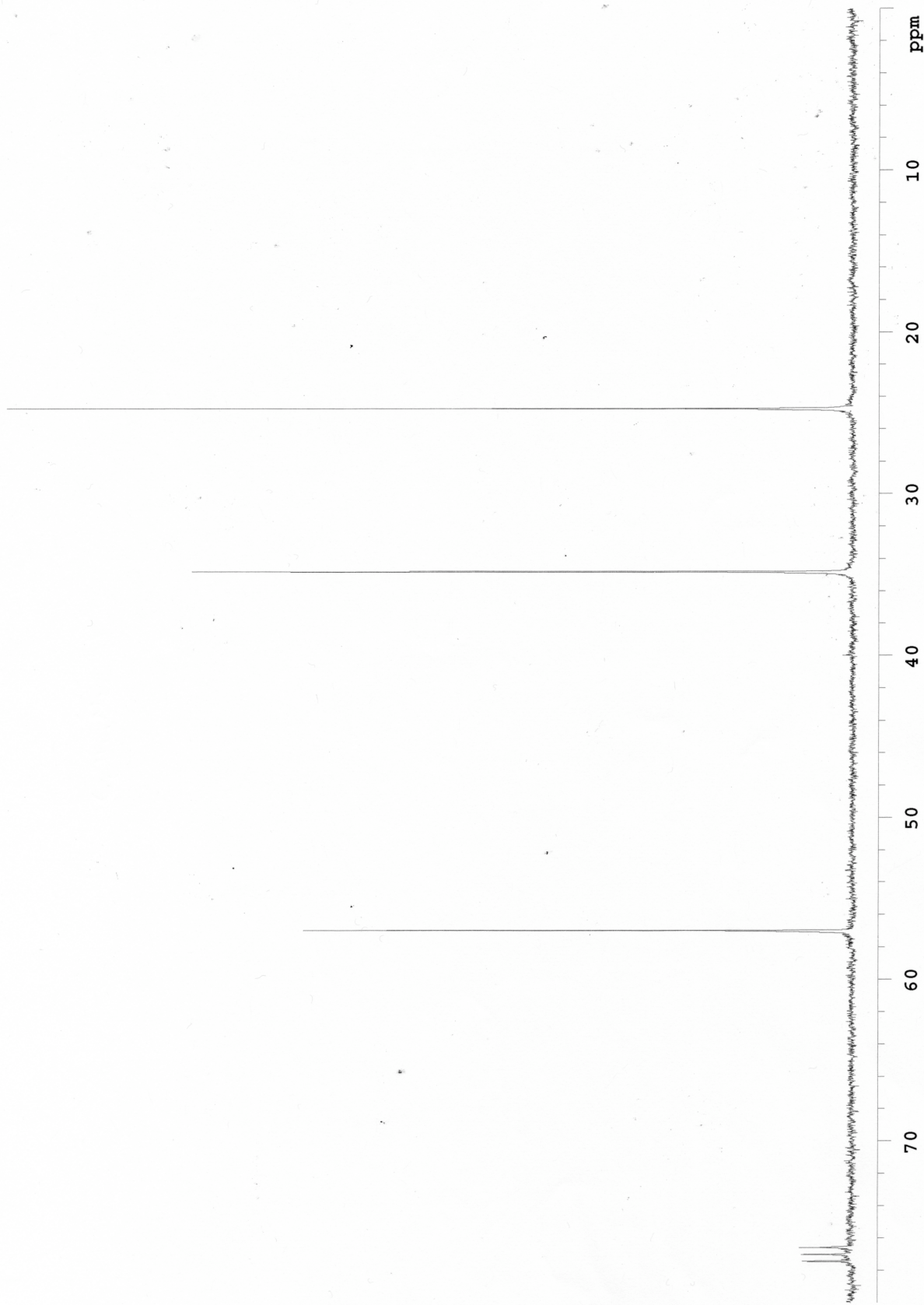


$C_6H_{14}N_2$



C₆H₁₄N₂

INDEX	FREQUENCY PPM	HEIGHT
1	4299.166	105.2
2	2625.880	126.6
3	1865.497	162.0



$C_6 H_{14} N_2$

DEPT 135

DEPT 90

DEPT 45

70 60 50 40 30 20 10 ppm

13C OBSERVE

Pulse Sequence: hetcor

Solvent: cdc13

Ambient temperature

GEMINI-300BB "unknown"

Relax. delay 1.000 sec

Acq. time 0.119 sec

Width 4289.8 Hz

2D Width 1830.3 Hz

128 repetitions

128 increments

OBSERVE C13, 75.4528005 MHz

DECOUPLE H1, 300.0714715 MHz

Power 40 dB

on during acquisition

off during delay

WALTZ-16 modulated

DATA PROCESSING

Line broadening 1.0 Hz

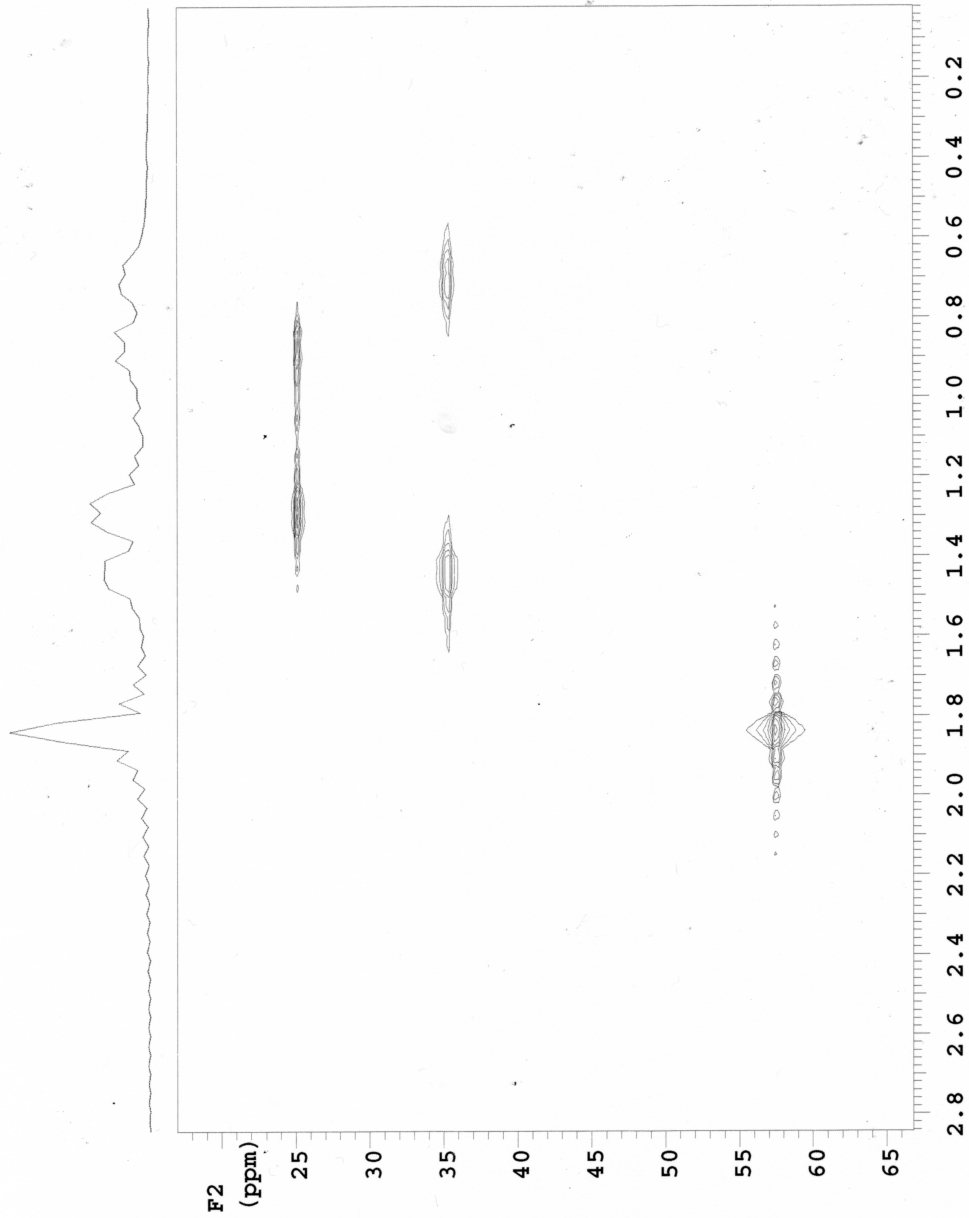
F1 DATA PROCESSING

Line broadening 0.3 Hz

FT size 512 x 512

Total time 5 hr, 33 min, 42 sec

$C_6H_{11}N_2$



F1 (ppm)