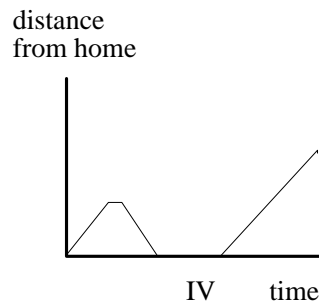
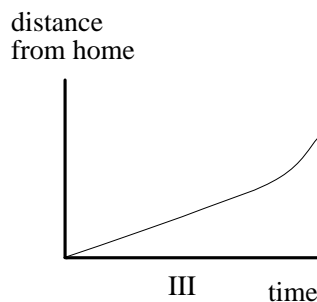
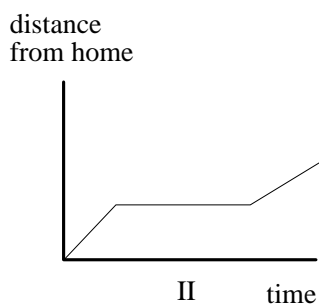
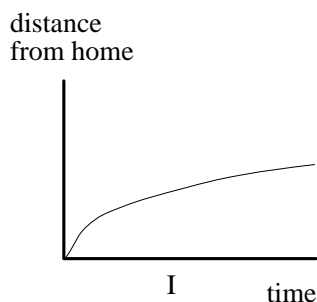


MCS 121 – Calculus I

Fall 2001

1. Which of the following graphs below best match the following three stories? Write a story for the remaining graph.

- (a) I had just left home when I realized I had forgotten my books, and so I went back to pick them up.
- (b) Things went fine until I had a flat tire.
- (c) I started out calmly but sped up when I realized I was going to be late.



2. A flight from Minneapolis/St. Paul Airport to O'Hare Airport in Chicago has to circle O'Hare several times before being allowed to land. Plot a graph of the distance of the plane from Minneapolis/St. Paul against time, from the moment of takeoff until landing.