

Homework set 9 (early draft)

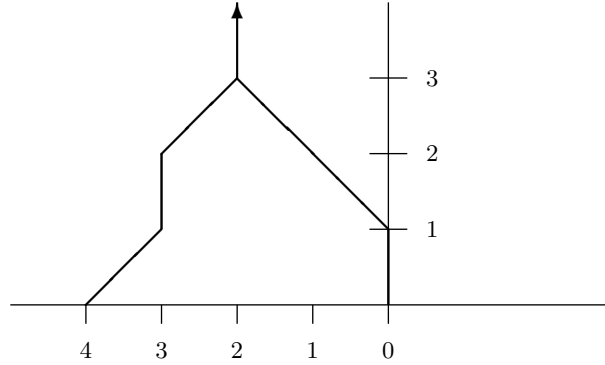
April 25, 2003

David Wolfe

1. (Open ended) Practice calculating means and temperatures of hot games until you become proficient. Begin with games of the form $a||b|c$. See what happens when you add an option. Use the computer to check your work. Try to find games of temperature $1/2$, $1/4$, $3/8$, etc.

Select two or three computations and write them down carefully so I can see you get it.

2. (a) Find a game with the following thermograph:



- (b) How can *any* such game, G , relate to 0? Be specific and explain your answer. (I.e., Can a game, G , with the above thermograph be greater than 0? Can another be less than zero? Equal? Incomparable?)