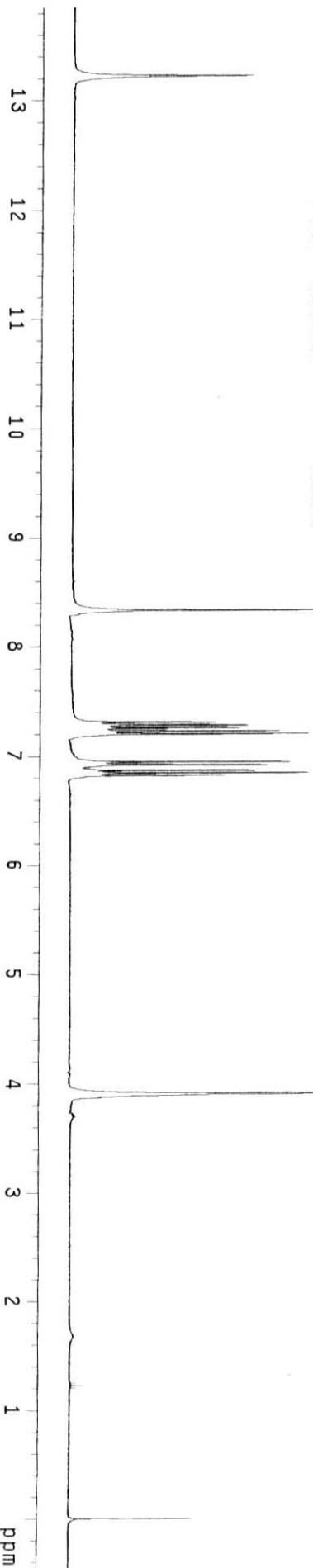


line list

INDEX	FREQUENCY	PPM	HEIGHT
1	3968.473	13.225	28.0
2	2501.740	8.337	68.4
3	2194.561	7.313	18.8
4	2192.883	7.308	22.7
5	2187.176	7.289	21.0
6	2186.169	7.286	26.5
7	2185.497	7.283	27.5
8	2184.490	7.280	27.7
9	2179.119	7.262	24.4
10	2177.440	7.256	26.3
11	2169.719	7.231	32.7
12	2168.040	7.225	30.5
13	2161.997	7.205	37.3
14	2160.319	7.199	31.6
15	2086.126	6.952	32.9
16	2085.119	6.949	34.3
17	2077.733	6.924	29.6
18	2076.726	6.921	30.8
19	2062.626	6.874	27.8
20	2061.619	6.870	28.8
21	2055.240	6.849	37.3
22	2054.233	6.846	35.6
23	2047.854	6.825	24.0
24	2046.847	6.821	17.8
25	1174.663	3.915	162.5
26	0.336	0.001	19.4



¹H NMR, CDCl₃ solvent
salenH₂
Inorganic I, Spring 2004