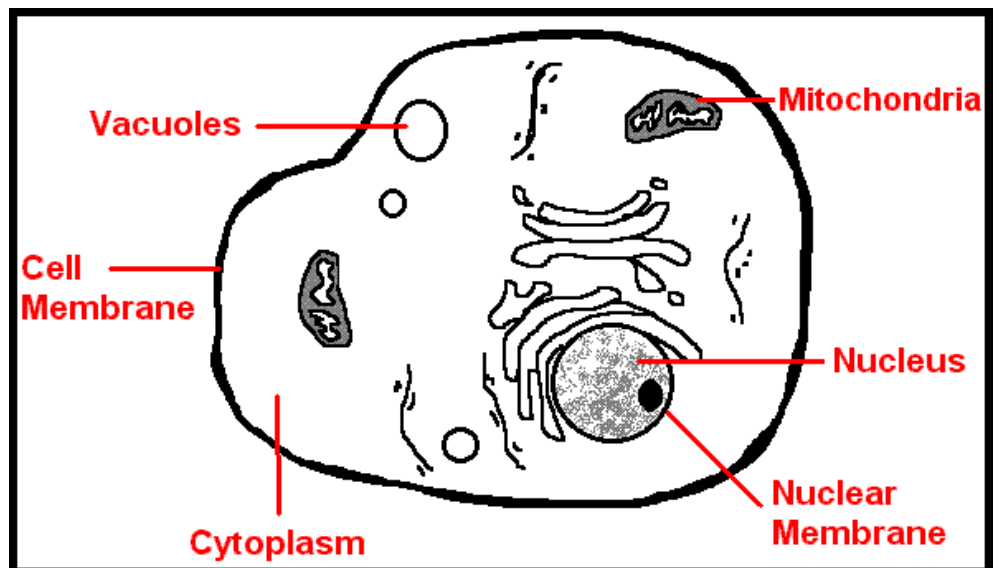


Summary: 171 words

Cells are the tiny building blocks of living things. Each cell has a part called a cell membrane; a thin covering around the cell. Located inside a cell is the cytoplasm. Inside the cytoplasm is the cell's control center called the nucleus. One cell splits into two cells. However before the cell splits, the nucleus doubles and divides in half so each new cell has a copy of the cell's instructions.

Each cell has a part called a cell membrane; a thin covering around the cell. Located inside a cell is the cytoplasm. Inside the cytoplasm is the cell's control center called the nucleus.



Red blood cells are tiny and round. Muscle cells are thin and long. All cells, whether plant or animal have these same parts: cell membrane, cytoplasm, nucleus, nuclear membrane, vacuoles, and mitochondria. Plant cells however have two additional parts that animal cells do not. Plant cells have cell walls. This sturdy layer around the cell membrane supports and protects the cell. Plant cells also contain chloroplasts.

Text from: <http://www.myschoolhouse.com/courses/0/1/70.asp>